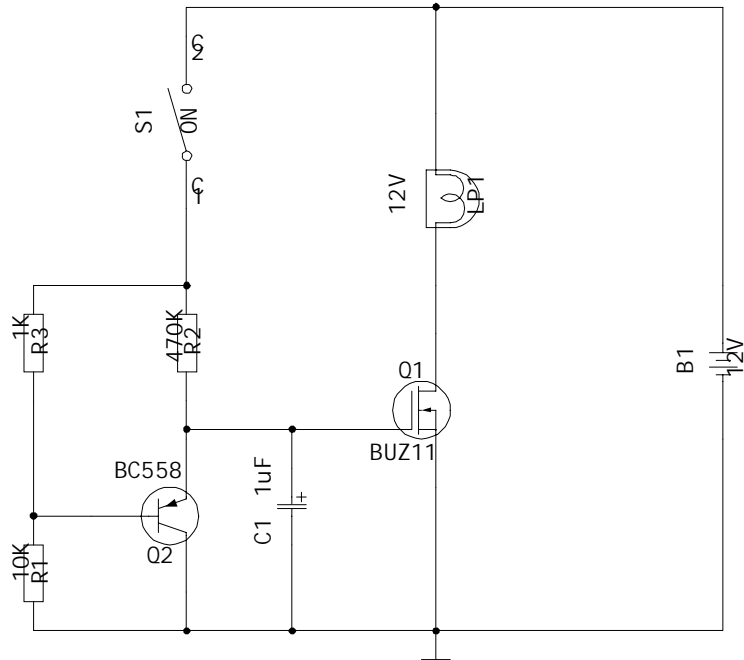
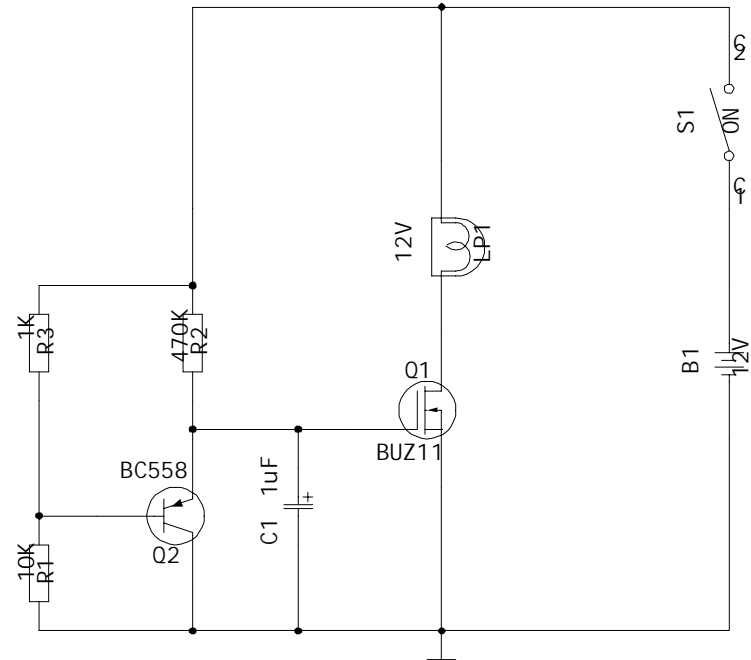


# Simple Softstart - Einfache Einschaltverzögerung

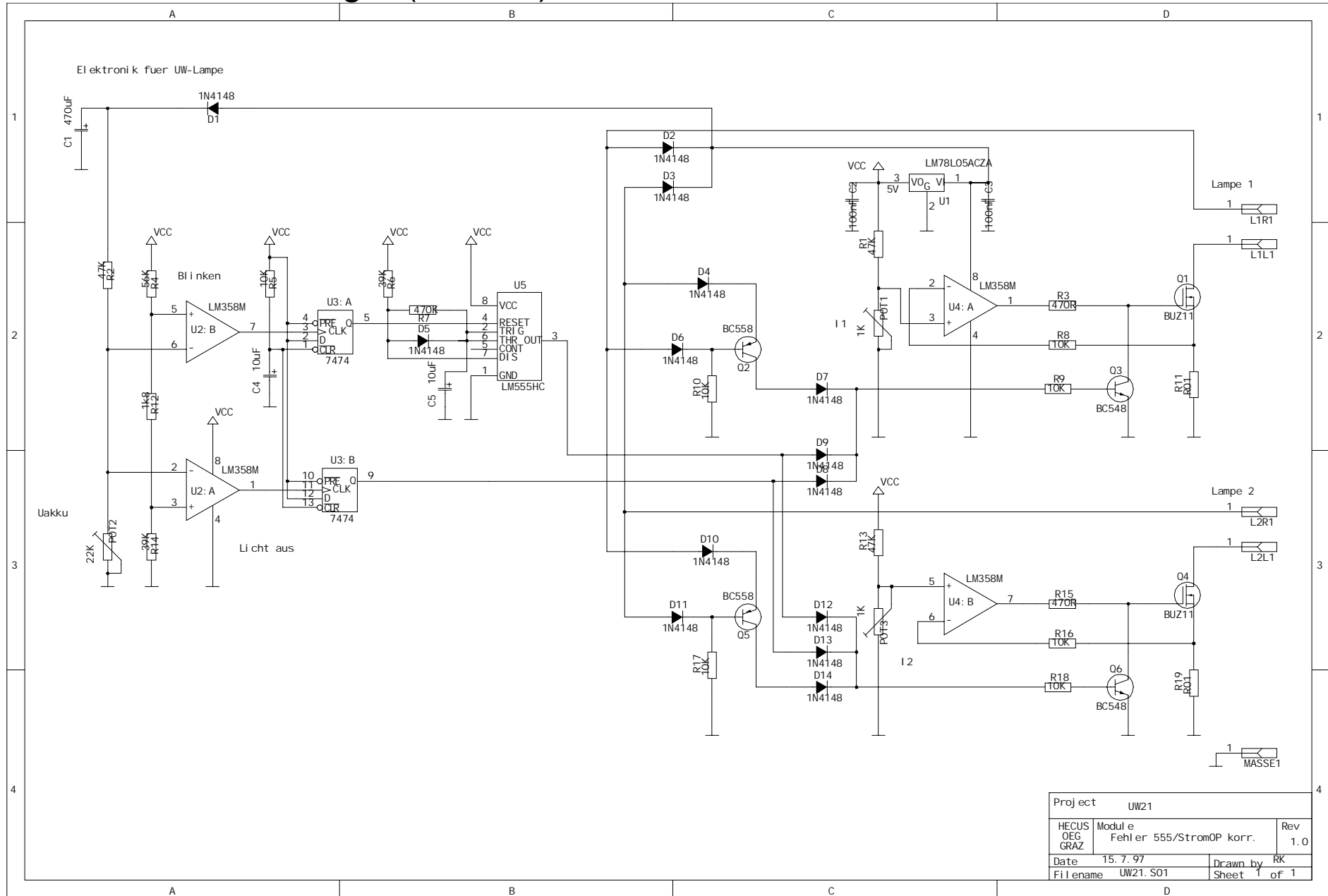


Dauerspannung - Niederstromschalter

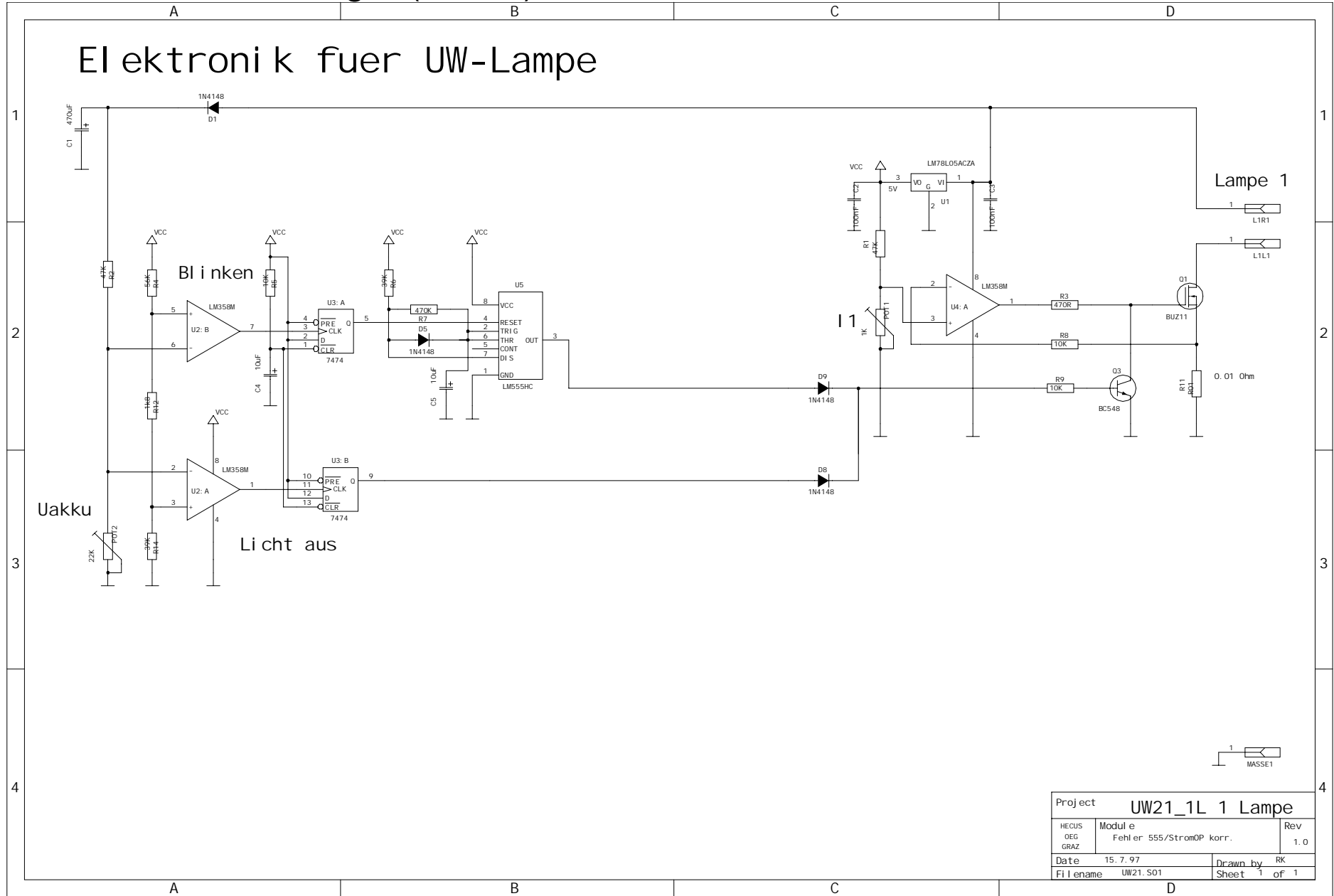


Hochstromschalter - getrennt

# Elektronik fuer UW-Lampe (2 bulbs)



# Elektronik fuer UW-Lampe



Project UW21_1L 1 Lampe		
HECUS OEG GRAZ	Module Fehler 555/StromOP korr.	Rev 1.0
Date 15. 7. 97	Drawn by RK	Sheet 1 of 1
Filename UW21.S01		

# Simple Electronics

